

Climate Change Impacts on Extreme Events in the United States: An Uncertainty Analysis

Erwan Monier and Xiang Gao



Report No. 245
May 2013

The MIT Joint Program on the Science and Policy of Global Change is an organization for research, independent policy analysis, and public education in global environmental change. It seeks to provide leadership in understanding scientific, economic, and ecological aspects of this difficult issue, and combining them into policy assessments that serve the needs of ongoing national and international discussions. To this end, the Program brings together an interdisciplinary group from two established research centers at MIT: the Center for Global Change Science (CGCS) and the Center for Energy and Environmental Policy Research (CEEPR). These two centers bridge many key areas of the needed intellectual work, and additional essential areas are covered by other MIT departments, by collaboration with the Ecosystems Center of the Marine Biology Laboratory (MBL) at Woods Hole, and by short- and long-term visitors to the Program. The Program involves sponsorship and active participation by industry, government, and non-profit organizations.


To inform processes of policy development and implementation, climate change research needs to focus on improving the prediction of those variables that are most relevant to economic, social, and environmental effects. In turn, the greenhouse gas and atmospheric aerosol assumptions underlying climate analysis need to be related to the economic, technological, and political forces that drive emissions, and to the results of international agreements and mitigation. Further, assessments of possible societal and ecosystem impacts, and analysis of mitigation strategies, need to be based on realistic evaluation of the uncertainties of climate science.

This report is one of a series intended to communicate research results and improve public understanding of climate issues, thereby contributing to informed debate about the climate issue, the uncertainties, and the economic and social implications of policy alternatives. Titles in the Report Series to date are listed on the inside back cover.

Ronald G. Prinn and John M. Reilly
Program Co-Directors

For more information, please contact the Joint Program Office

Postal Address: Joint Program on the Science and Policy of Global Change
77 Massachusetts Avenue
MIT E19-411
Cambridge MA 02139-4307 (USA)
Location: 400 Main Street, Cambridge
Building E19, Room 411
Massachusetts Institute of Technology
Access: Phone: +1.617. 253.7492
Fax: +1.617.253.9845
E-mail: globalchange@mit.edu
Web site: <http://globalchange.mit.edu/>

 Printed on recycled paper

Climate Change Impacts on Extreme Events in the United States: An Uncertainty Analysis

Erwan Monier^{*†} and Xiang Gao^{*}

Abstract

Extreme weather and climate events, such as heat waves, droughts and severe precipitation events, have substantial impacts on ecosystems and the economy. However, future climate simulations display large uncertainty in mean changes. As a result, the uncertainty in future changes of extreme events, especially at the local and national level, is large. In this study, we analyze changes in extreme events over the US in a 60-member ensemble simulation of the 21st century with the Massachusetts Institute of Technology (MIT) Integrated Global System Model–Community Atmosphere Model (IGSM-CAM). Four values of climate sensitivity, three emissions scenarios and five initial conditions are considered. The results show a general intensification of extreme daily maximum temperatures and extreme precipitation events over most of the US. The number of rain days per year increases over the Great Plains but decreases in the northern Pacific Coast and along the Gulf Coast. Extreme daily minimum temperatures increase, especially over the northern parts of the US. As a result, the number of frost days per year decreases over the entire US and the frost-free zone expands northward. This study displays a wide range of future changes in extreme events in the US, even simulated by a single climate model. Nonetheless, it clearly shows that under a reference emissions scenario with no climate policy, changes in extreme events reach dangerous levels, especially for large values of climate sensitivity. On the other hand, the implementation of a stabilization scenario drastically reduces the changes in extremes, even for the highest climate sensitivity considered.

Contents

1. INTRODUCTION	1
2. METHODOLOGY	2
2.1 Model Description	2
2.2 Description of the Simulations	3
2.3 Calculation of Extreme Events	4
3. RESULTS	4
4. SUMMARY AND CONCLUSION	9
5. REFERENCES	11

1. INTRODUCTION

Extreme weather and climate events, such as heat waves, droughts and severe precipitation events, have received increasing attention in recent years, due to the often large impacts on society and ecosystems. Extreme events can impact, directly or indirectly, all sectors of the economy. They can destroy large infrastructure and private properties, and lead to the severe human loss. Various studies have examined the impacts of extreme events on infrastructure (Penning-Rowsell and Wilson, 2006; Wright *et al.*, 2012), air quality and human health (Leibensperger *et al.*, 2008; Mahmud *et al.*, 2012), terrestrial ecosystems (Parmesan *et al.*, 2000; Xiao *et al.*, 2009), agriculture and forestry (Rosenzweig *et al.*, 2001; Maracchi *et al.*, 2005), water demand (Strzepek *et al.*, 2010), as well as energy demand and production (Smoyer-Tomic *et al.*, 2003; Yergin, 2006). In addition, the economic impact and human loss due to extreme weather events have been substantial in recent history. For agriculture, single extreme weather events in the US can lead to

^{*} Joint Program on the Science and Policy of Global Change, Massachusetts Institute of Technology, Cambridge, MA.

[†] Corresponding author (Email: emonier@mit.edu).

economic damages that exceed \$1 billion (Rosenzweig *et al.*, 2001). The most severe extreme weather events for agriculture in the US in recent history were the 1988 drought and the 1993 flood. Hurricanes Katrina and Rita shut down 27 percent of oil production in the US (Yergin, 2006) and Hurricane Sandy inflicted economic damages that could reach \$50 billion, based on early estimates (Craft, 2012). In 1998, flooding and landslides due to Hurricane Mitch resulted in more than 10,000 deaths in Central America (Easterling *et al.*, 2000) while the European summer heat wave of 2003 resulted in more than 70,000 deaths in 16 countries (Robine *et al.*, 2008).

At the same time, extreme temperature and precipitation events have experienced significant changes in the last decades (Christidis *et al.*, 2005; Kunkel *et al.*, 2008). In the US, extreme high temperatures have generally increased, while the occurrence of extreme cold temperature has generally decreased (DeGaetano and Allen, 2002). The US has also experienced an increasing probability of intense precipitation events (Groisman *et al.*, 2005). With global warming, it is anticipated that extreme weather events such as droughts and floods will become more frequent, widespread and intense during the 20th century (IPCC, 2007b), yet there is a large uncertainty in these projections, particularly at the national and regional spatial scales. Future climate simulations generally project increases in the greatest precipitation events over northwestern and northeastern North America (Meehl *et al.*, 2005). However, there is a substantial level of disagreement between models for the magnitude and the sign of extreme precipitation events.

Climate change experiments and the assessments of the economic impacts of global climate change have mostly focused on changes in the mean rather than on extremes. However, the primary social impacts and economic costs associated with climate change are likely to result from shifts in the frequency and magnitude of extreme events. A combination of observed trends, theoretical understanding of the climate system, and numerical modeling experiments is needed to better understand how future climate change may impact the frequency and intensity of extreme events. Additionally, investigating changes in extreme events under climate change should take into account the large uncertainty in future projections of climate change.

In this paper, we present an analysis of future changes in the tails of daily-scale temperature and precipitation distribution over the US for climate simulations of future climate change. This study focuses on three sources of uncertainty in projections of climate change: (i) uncertainty in the emissions projections, using different climate policies; (ii) uncertainty in the climate system parameters, represented by different values of climate sensitivity and the strength of aerosol forcing; and (iii) natural variability, obtained by perturbing initial conditions. The simulations used in this analysis are part of a multi-model project to achieve consistent evaluation of climate change impacts in the US (Waldhoff *et al.*, 2013).

2. METHODOLOGY

2.1 Model Description

For this study, we use an ensemble of climate simulations with the Massachusetts Institute of Technology (MIT) Integrated Global System Model–Community Atmosphere Model (IGSM-CAM) (Monier *et al.*, 2013b). The IGSM is an integrated assessment model that couples

an earth system model of intermediate complexity to a human activity model. The earth system component of the IGSM includes a two-dimensional zonally averaged statistical dynamical representation of the atmosphere, a three-dimensional dynamical ocean component with a thermodynamic sea-ice model and an ocean carbon cycle (Dutkiewicz *et al.*, 2005, 2009) and a Global Land Systems (GLS) that represents terrestrial water, energy and ecosystem processes (Schlosser *et al.*, 2007), including terrestrial carbon storage and the net flux of carbon dioxide, methane and nitrous oxide from terrestrial ecosystems. The IGSM2.3 also includes an urban air chemistry model (Mayer *et al.*, 2000) and a detailed global scale zonal-mean chemistry model (Wang *et al.*, 1998) that considers the chemical fate of 33 species including greenhouse gases and aerosols. Finally, the human systems component of the IGSM is the MIT Emissions Predictions and Policy Analysis (EPPA) model (Paltsev *et al.*, 2005), which provides projections of world economic development and emissions over 16 global regions along with analysis of proposed emissions control measures.

Since the IGSM includes a human activity model, it is possible to analyze uncertainties in emissions resulting from both uncertainty in model parameters and uncertainty in future climate policy decisions. Another major feature is the flexibility to vary key climate parameters controlling the climate response: climate sensitivity, strength of aerosol forcing and ocean heat uptake rate. Because the IGSM has a two-dimensional zonal-mean atmosphere, it cannot be directly used to simulate regional climate change. To simulate climate change over the US, the IGSM is linked to the National Center for Atmospheric Research (NCAR) Community Atmosphere Model (CAM) (Collins *et al.*, 2006), with new modules developed and implemented in CAM to allow climate parameters to be changed to match those of the IGSM. In particular, the climate sensitivity of CAM is changed using a cloud radiative adjustment method (Sokolov and Monier, 2012). In the IGSM-CAM framework, CAM is run at a horizontal resolution of $2^\circ \times 2.5^\circ$. More details on the IGSM-CAM framework can be found in (Monier *et al.*, 2013b).

2.2 Description of the Simulations

Uncertainty in future climate change is considered by running the IGSM-CAM with four values of climate sensitivity and three emissions scenarios, resulting in 12 core simulations. The three emissions scenarios considered are (i) a reference scenario with unconstrained emissions after 2012 (REF), with a total radiative forcing of 9.7 W/m^2 by 2100; (ii) a stabilization scenario (POL4.5), with a total radiative forcing of 4.5 W/m^2 by 2100; and (iii) a more stringent stabilization scenario (POL3.7), with a total radiative forcing of 3.7 W/m^2 by 2100. The four values of climate sensitivity (CS) considered are 2.0, 3.0, 4.5 and 6°C , which represent respectively the lower bound (CS2.0), best estimate (CS3.0) and upper bound (CS4.5) of climate sensitivity based on the Fourth Assessment Report of the Intergovernmental Panel on Climate Change (IPCC, 2007a), and a low probability/high risk climate sensitivity (CS6.0). The associated net aerosol forcing was chosen to ensure a good agreement with the observed climate change over the 20th century. More details on the emissions scenarios and the economic implications, along with the choice of climate sensitivity are given in Paltsev *et al.* (2013). For

each set of climate sensitivities and emissions scenarios, a five-member ensemble is run with different initial conditions to account for the uncertainty in natural variability in the climate system, resulting in a total of 60 simulations. Results are presented for the five-member ensemble means in order to better extract any long-term signal from the year-to-year variability and provide more robust results.

Monier *et al.* (2013a) provides an overview of the projected changes in mean temperature and precipitation over the US, along with an analysis of the contributions of various sources of uncertainty. Monier *et al.* (2013a) shows that the choice of the climate model has a large impact on the range and patterns of precipitation changes, less so for changes in temperature. As a result, a limitation of this study is that we only use one atmospheric model. The consideration of other models would likely give a wider range of changes in extreme precipitation events and should be the focus of further research.

2.3 Calculation of Extreme Events

In this study we analyze the changes in number of frost days (nFD) between present day (defined as the 1981–2010 period) and the 2086–2115 period (hereinafter referred to as 2100). The number of frost days is defined as the number of days with daily minimum temperature less than 0°C. We also analyze the changes in the 30-year means of annual 95th percentile daily maximum temperature (T95), annual 5th percentile daily minimum temperature (T05), and annual 95th percentile daily precipitation events (P95) over the US from present day to 2100. Each of these metrics is calculated following the method presented in Diffenbaugh *et al.* (2006); Walker and Diffenbaugh (2009). For each 30-year period considered (present day and future), T95 is calculated at each grid cell for each year, and the T95 30-year mean is then calculated. The same approach is used for the T05. Essentially, we are taking the mean of the 18th warmest event (or 18th coldest event) of each of the years considered in each period and analyzing how this metrics changes from present day to 2100. The method differs slightly for precipitation, because precipitation does not necessarily occur every day of the year at every grid cell. As a result, we first determine for each grid cell the days when precipitation occurs—defined as daily precipitation exceeding 1.0 mm following (Mesinger *et al.*, 2006)—and then calculate the 95th percentile of rain days for each year. Finally we present an analysis of the changes in the annual number of rain days (nRD), defined as the number of days per year with precipitation exceeding 1.0 mm.

3. RESULTS

Figure 1 shows maps of changes in annual 5th percentile in daily minimum temperature (T05) from present day to 2100 for the 12 core simulations, averaged over the five initial conditions. The range of changes in T05 varies greatly among the different emissions scenarios and climate sensitivities. All simulations show increases in T05, with a general north-south dipole pattern. The largest increases take place in the Northern US and over the Rocky Mountains, and the least amount of change occurs over the Southern States. The impact of the climate sensitivity is strong among all emissions scenarios. Under the REF scenario, the maximum increases in T05 range

CHANGES IN ANNUAL 5TH PERCENTILE DAILY MINIMUM TEMPERATURE (°C)
2086-2115 RELATIVE TO 1981-2010

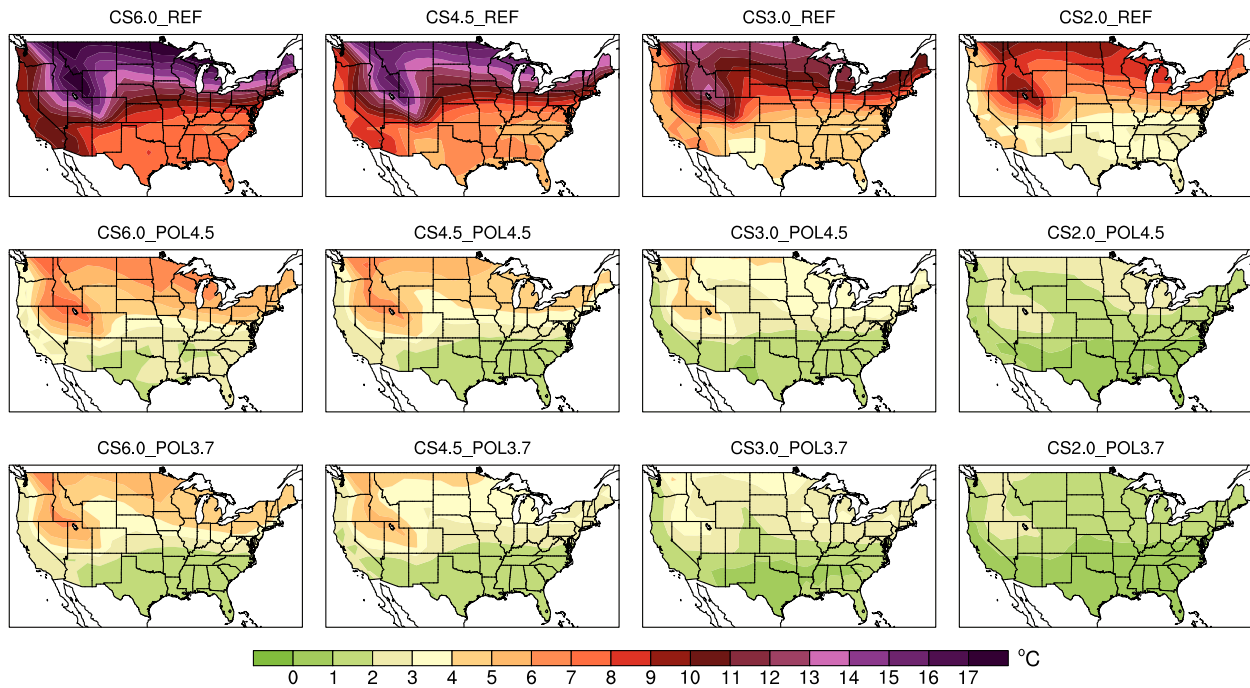


Figure 1. Changes in annual 5th percentile of daily minimum temperature (in °C) for the 2085–2115 period relative to the 1981–2010 period each of the 12 core scenarios, averaged over the five different initial conditions.

from about 16°C for CS6.0 to around 10°C for CS2.0. In comparison, the the implementation of either policy scenario limits the increases in T05 to under 7°C, regardless of the value of climate sensitivity. For the lowest climate sensitivity (CS2.0), changes in T05 are less than 3°C over most of the US. This underlines the risk of severe changes in extreme events under a reference scenario and the strong mitigating impact the stabilization scenarios.

Figure 2 shows a similar analysis for changes in annual 95th percentile in daily maximum temperature (T95). Unlike for T05, the general patterns of change in T95 exhibit a strong east-west dipole pattern. The largest increases in T95 are found over the Western US, and to a lesser extent over the Great Lakes and New England. Under the reference scenario, the magnitude of increase in T95 ranges from 5° to 12°C over the Western Coast and from 2° to 7°C in the Eastern US. Such increases in the top 18 warmest events per year would likely have devastating impacts on both ecosystems and humans. To put this in perspective, during the European summer heat wave of 2003, Europe experienced summer surface air temperature anomalies (based on the June-July-August daily averages) reaching up to 5.5°C with respect to the 1961–1990 mean (Garcia-Herrera *et al.*, 2010). Instead of 5°C anomaly from the mean, the present results suggest that, under the reference scenario, the present-day extreme temperatures are likely to increase by 5°C over a large part of the US. However, under either policy scenario, the intensification of T95 would be drastically reduced, with increases of less than 1°C over most of the US for the CS2.0.POL3.7 scenario.

CHANGES IN ANNUAL 95TH PERCENTILE DAILY MAXIMUM TEMPERATURE (°C)
2086-2115 RELATIVE TO 1981-2010

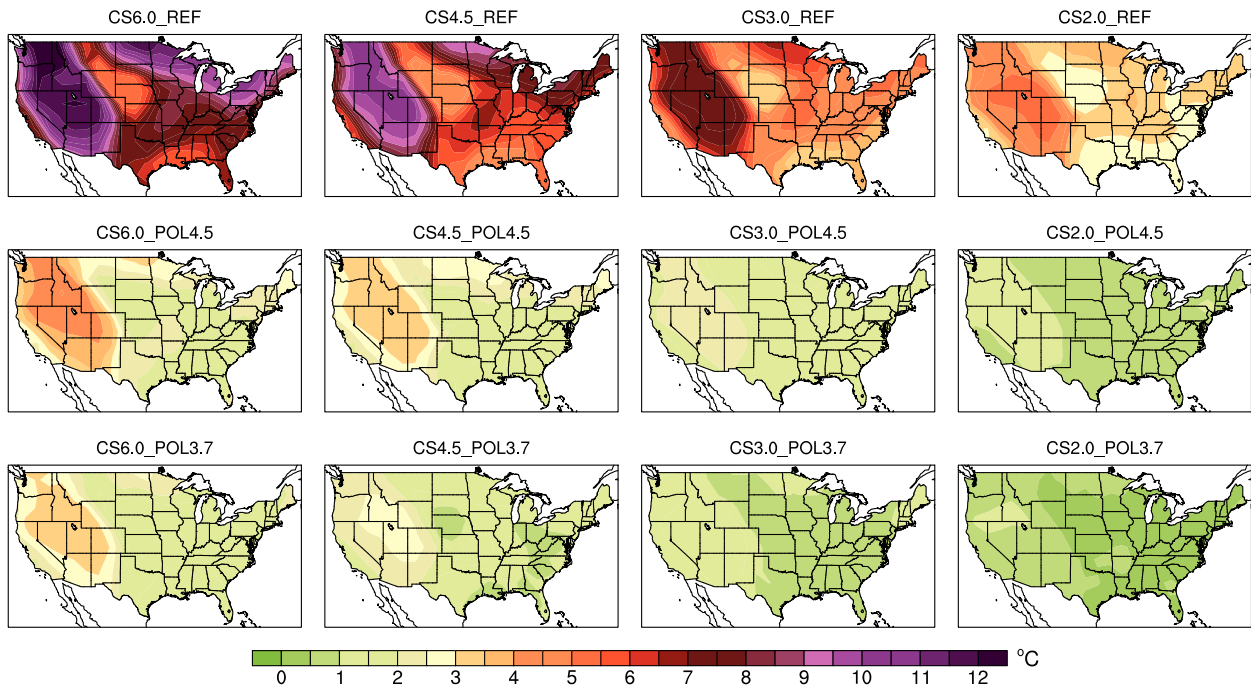


Figure 2. Changes in annual 95th percentile of daily maximum temperature (in °C) for the 2085–2115 period relative to the 1981–2010 period each of the 12 core scenarios, averaged over the five different initial conditions.

Figure 3 shows a comparison of the IGSM-CAM simulation of present-day annual mean number of frost days (nFD) with observational data from the North American Climate Extremes Monitoring Project (NACEM, information online at www.ncdc.noaa.gov/nacem/). The model simulation agrees reasonably well with the observations and clearly captures the spatial distribution of frost days over the US. The distribution shows a strong latitude gradient, ranging from the almost frost-free region over the Southern US (Texas, Florida, Arizona, and California) to the frost-dominated Northern US (with an average of 150 frost days per year). The latitudinal gradient is modulated by the presence of the Rocky Mountains where the nFD is as large as in the Northern US. Finally coastal regions usually display fewer frost days than inland. Figure 3 also shows the annual mean nFD in 2100 under each set of climate sensitivities and emissions scenarios. There is a great deal of resemblance in the spatial distributions of frost days among all the simulations. Compared with present day, all the simulations show decreases in nFD across the US in response to the ubiquitous temperature rise. The largest decreases occur for the REF scenario and for the highest climate sensitivity (CS6.0), where no region experiences more than 40 days of frost per year on average. This is equivalent to a decrease in nFD of about 20 days for warmer regions and of more than 100 days for colder regions. Furthermore, the frost-free zone expands to all of California, the northern Pacific Coast, most of Arizona, the Gulf Coast and the coast of the Carolinas. Under the reference scenario, the range of number of frost days in 2100 between the different values of climate sensitivity is large, indicating the impact of the uncertainty

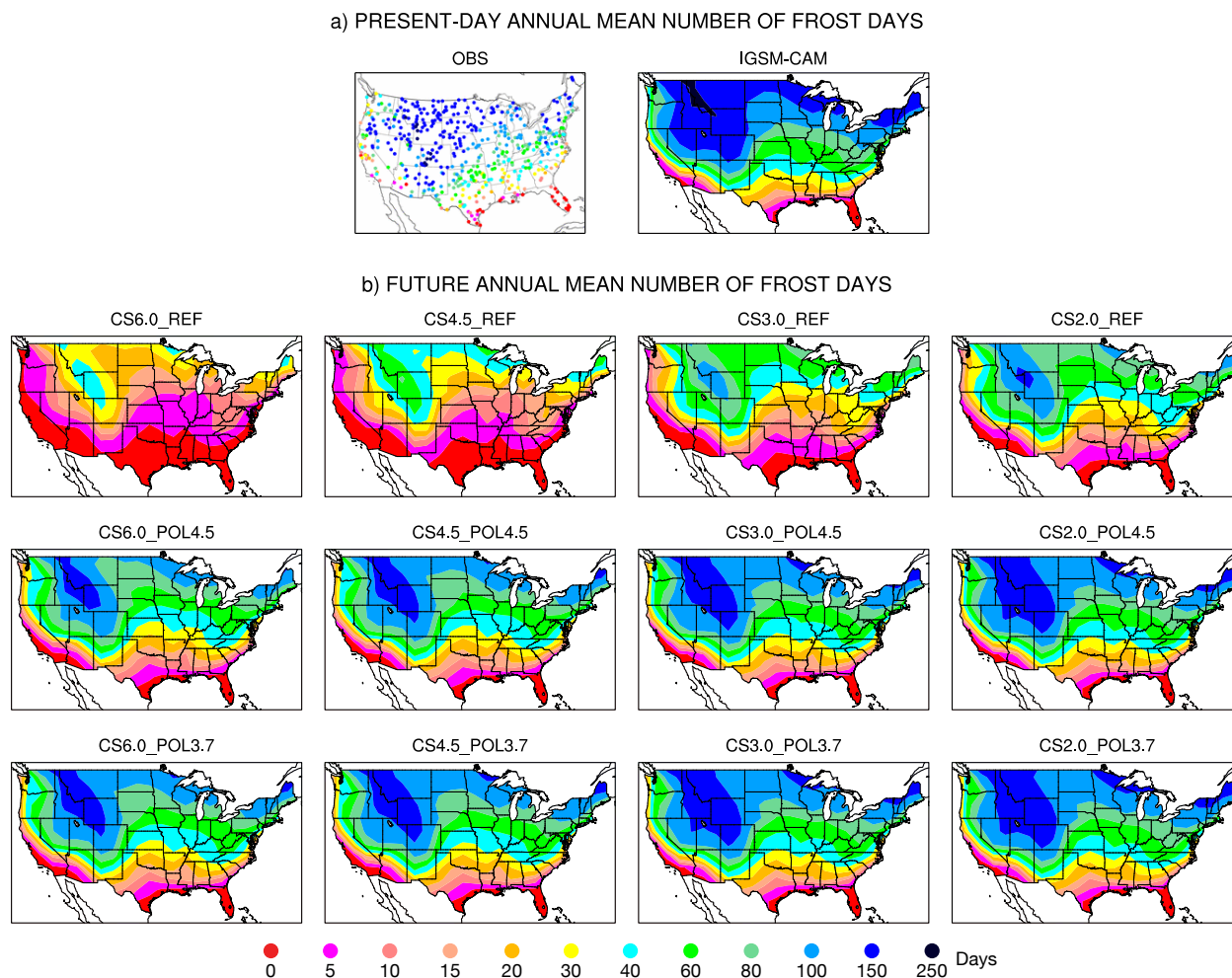


Figure 3. Annual number of frost days a) for NACEM observations and IGSM-CAM simulation of present day (1981–2010 period) and b) for IGSM-CAM simulations of the 2086–2115 period for each of the 12 core scenarios, averaged over the five different initial conditions.

in climate sensitivity. The implementation of any of the two stabilization policies greatly reduces the decrease in nFD from present day to 2100 compared to the REF scenario. Finally, the maps of nFD in 2100 are very similar amongst stabilization scenarios, even for different values of the climate sensitivity. This indicates that constraining future emissions would greatly constrain future changes in frost days, regardless of our understanding of the climate system response.

Figure 4 shows the changes in annual 95th percentile in rain day (P95) events. The IGSM-CAM simulations show a general increase in the intensity of extreme precipitation events over most of the US. The largest changes are coincident with the simulations with the largest warming, highest climate sensitivity and highest levels of greenhouse gases concentrations in the atmosphere). Therefore, the implementation of any stabilization policy will inevitably have great impact. For example, changes in P95 in the CS6.0_POL4.5 scenario are about the same as in the CS2.0_REF scenario. Unlike changes in extreme temperature events, precipitation changes show more heterogeneity in their spatial distributions. A number of local changes are not consistent

CHANGES IN ANNUAL 95TH PERCENTILE DAILY PRECIPITATION EVENTS (mm/day)
2086-2115 RELATIVE TO 1981-2010

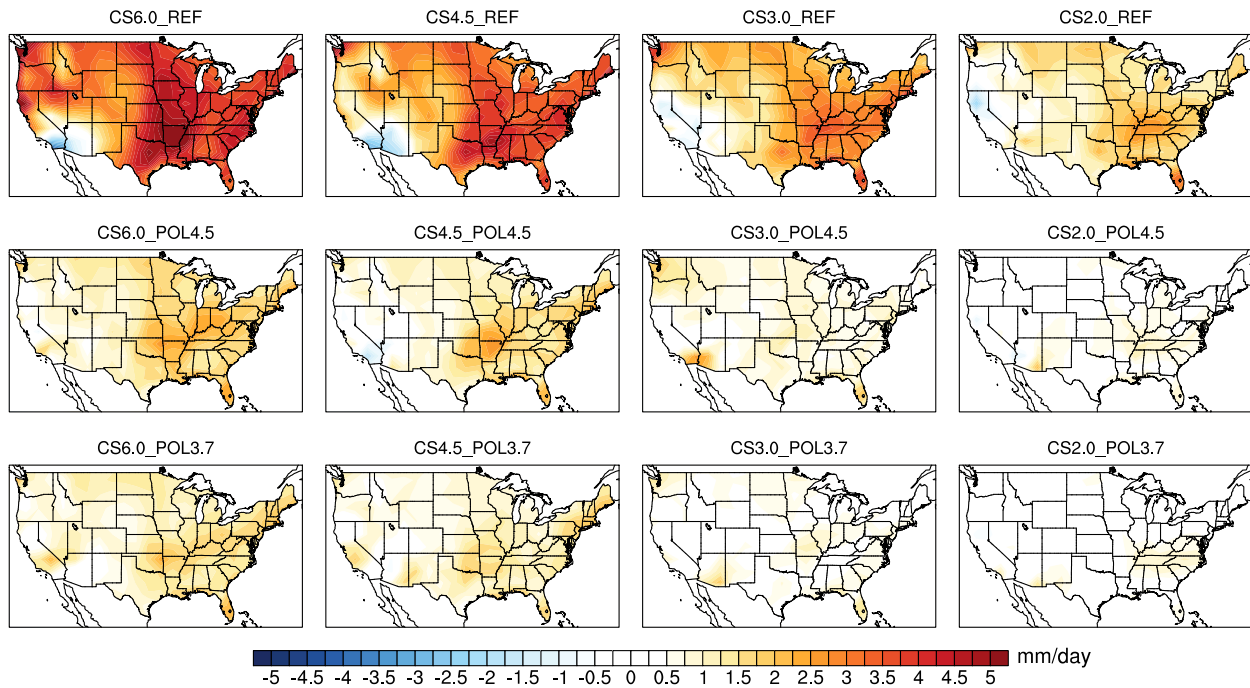


Figure 4. Changes in annual 95th percentile of daily precipitation events (in mm/day) for the 2085–2115 period relative to the 1981–2010 period each of the 12 core scenarios, averaged over the five different initial conditions.

among the various simulations. For example, P95 over Southern California decreases in the CS6.0_REF and CS4.5_REF scenarios but increases in the CS3.0_POL4.5. This is caused by the small size of the ensemble simulation with perturbation of initial conditions. These results are essentially dominated by large inter annual variability in a particular member of the ensemble simulation. This underlines the importance of running multiple simulations with different initial conditions to extract a robust signal.

Changes in the average number of rain days (nRD) per year from present day to 2100 are shown in **Figure 5**. All simulations show an increase in nRD over most of the US, and particularly over the Great Plains, with decreases in nRD only over the northern Pacific Coast and along the Gulf Coast. The magnitude of the changes varies greatly among the 12 simulations, and is affected equally by climate sensitivity and emissions scenario. The changes in nRD also display a latitudinal migration of the location of the maximum increases and decreases in nRD with various emissions scenarios. Under the POL3.7 scenario, the maximum increase in nRD occurs over the Southern Great Plains, while the maximum decrease takes place over Oregon. Under the REF scenario, the location of the maximum increase and decreases tends to shift north, in particular for the higher values of climate sensitivity. Changes in nRD for the CS2.0_POL3.7 scenario remain under 10 rain day events per year over most of the US.

It should be noted that, in this analysis, the northern Pacific Coast experiences a decrease in the number of rain day events but an increase in the magnitude of heavy precipitation events. In

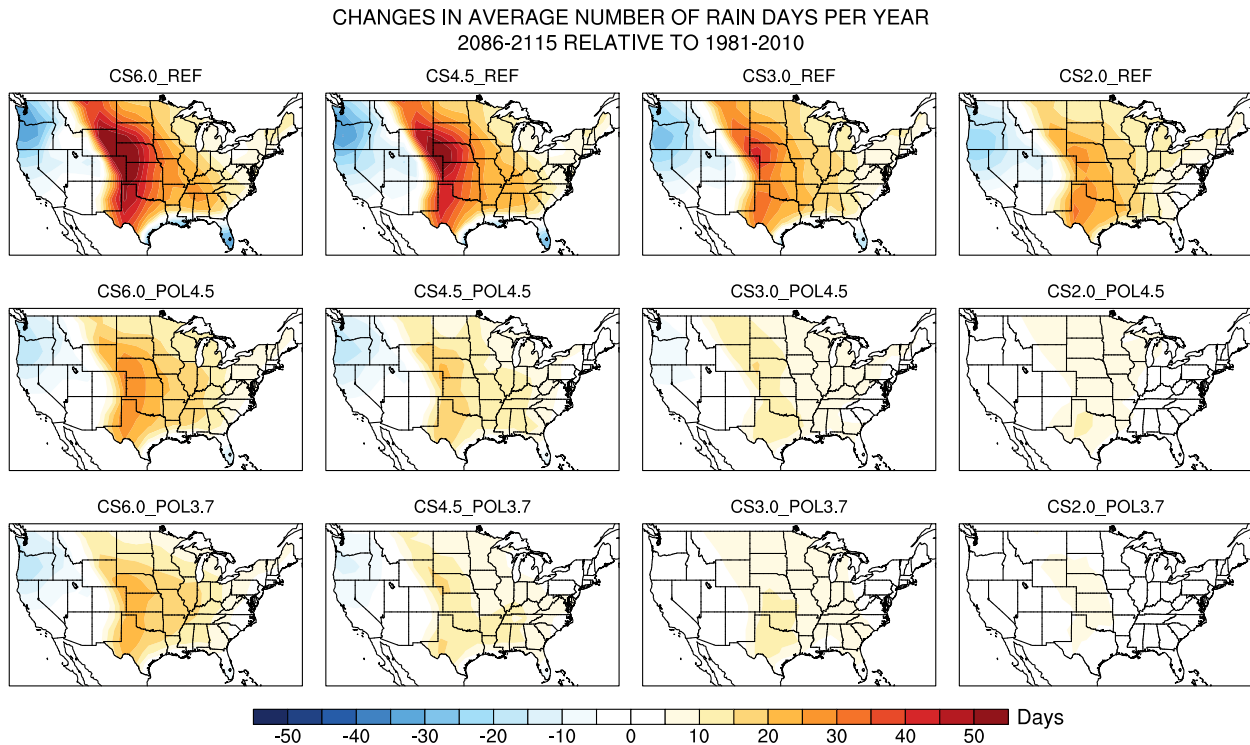


Figure 5. Changes in annual number of daily precipitation events for the 2085–2115 period relative to the 1981–2010 period each of the 12 core scenarios, averaged over the five different initial conditions.

contrast, the simulations project increases in extreme precipitation over the Great Plains concurrently with an increase in the number of rain days. This demonstrates the heterogeneous spatial response of extreme events to climate change.

4. SUMMARY AND CONCLUSION

In this study, we analyze changes in extreme events from 60 IGSM-CAM simulations of climate change used in a multi-model project to achieve consistent evaluation of climate change impacts in the US. The IGSM-CAM simulations are built around a core of 12 scenarios with three different emissions scenarios and four values of climate sensitivity. For each of the 12 core simulations, a five-member ensemble simulation is run with different initial conditions to account for uncertainty in natural variability. This modeling framework considers three sources of uncertainty in future climate projections: projected emissions, global climate response and natural variability.

The results show a general intensification of extreme daily maximum temperatures and extreme precipitation events over most of the US. The number of rain days per year increases over the Great Plains but decreases in the northern Pacific Coast and along the Gulf Coast. This means that the Northern Pacific Coast is likely to experience fewer rain days on average but more intense extreme precipitation events. Extreme daily minimum temperatures increase, especially over the northern parts of the US. As a result, the number of frost days per year decreases over the entire US and the frost-free zone expands northward. This study displays a wide range of future changes

in extreme events in the US, even simulated by a single climate model. Nonetheless, it clearly shows that under a reference emissions scenario with no climate policy, changes in extreme events reach dangerous levels, especially for large values of climate sensitivity. On the other hand, the implementation of a stabilization scenario, drastically reduces the changes in extremes, even for the highest climate sensitivity considered.

Under the reference scenario, the increase in the coldest days temperature over the northern parts of the US would likely lead to positive impacts on energy demand during the winter. However, the intensification of extreme hot days reach seriously dangerous levels, with an increase of 5°C in T95 over a large part of the US, regardless of the climate sensitivity. The economic impacts of the intensification of extreme hot days are likely to be significant as it would affect agriculture, energy and water demand (especially in California) and human health. The significant decreases in annual number of frost days over most of the US would likely have benefits for agriculture as it would bring an earlier spring and would result in a longer growing season. This has already been observed in the past few decades (Hicke *et al.*, 2002). At the same time, milder winters and a decrease in frost days would increase the survival of many insects and pests (Bale *et al.*, 2002), which could lead to the spread of crop diseases. Meanwhile, the implementation of stabilization policies significantly limits the changes in annual number of frost days, regardless of the climate sensitivity. The complex interaction between the various changes in extreme events and the numerous impacts on economic sectors makes a comprehensive analysis of the climate change impacts difficult. This emphasizes the need for multi-model projects to achieve consistent evaluation of climate change impacts in the US (Waldhoff *et al.*, 2013).

A particular difference between changes in extreme temperature and extreme precipitation is the presence of local changes in precipitation with different signs in different scenarios. These local changes arise from large year-to-year variability in the individual simulation with different initial conditions. This indicates that the five-member ensemble is not large enough to filter out all the noise at the local scale and extract robust signals over the entire US. This further emphasizes the need for large ensemble simulation sampling for various sources of uncertainty in climate change.

Finally, a limitation of this study is that only one atmospheric model is considered. However, considering the large range of future changes in extreme events simulated by a single climate model, this study emphasize the great deal of uncertainty in both future climate change and its impacts on extreme event in the US. In addition, we realize that the relatively low resolution of the IGSM-CAM might lead to biases in the realism of key atmospheric processes controlling extreme events. Walker and Diffenbaugh (2009) find that higher resolution could confer more accurate simulations of the tails of daily-scale distribution. However, an uncertainty analysis based on a large ensemble simulation with different values of climate sensitivity, different emissions scenarios and multiple initial conditions would prove particularly difficult with a variety of climate models including high-resolution models. Nonetheless, we intend to extend this uncertainty analysis of changes in extreme events under climate change to take into account structural uncertainty and the influence of horizontal resolution.

Acknowledgements

This work was partially funded by the US Environmental Protection Agency under Cooperative Agreement #XA-83600001. The Joint Program on the Science and Policy of Global Change is funded by a number of federal agencies and a consortium of 40 industrial and foundation sponsors. For a complete list of sponsors, see: <http://globalchange.mit.edu>. This research used the Evergreen computing cluster at the Pacific Northwest National Laboratory. Evergreen is supported by the Office of Science of the US Department of Energy under Contract No. DE-AC05-76RL01830.

5. REFERENCES

- Bale, J., G. Masters, I. Hodkinson, C. Awmack, T. Bezemer, V. Brown, J. Butterfield, A. Buse, J. Coulson, J. Farrar *et al.*, 2002: Herbivory in global climate change research: direct effects of rising temperature on insect herbivores. *Glob. Change Biol.*, **8**(1): 1–16. doi:[10.1046/j.1365-2486.2002.00451.x](https://doi.org/10.1046/j.1365-2486.2002.00451.x).
- Christidis, N., P. Stott, S. Brown, G. Hegerl and J. Caesar, 2005: Detection of changes in temperature extremes during the second half of the 20th century. *Geophys. Res. Lett.*, **32**(20): L20716. doi:[10.1029/2005GL023885](https://doi.org/10.1029/2005GL023885).
- Collins, W., P. Rasch, B. Boville, J. Hack, J. McCaa, D. Williamson, B. Briegleb, C. Bitz, S. Lin and M. Zhang, 2006: The formulation and atmospheric simulation of the Community Atmosphere Model version 3 (CAM3). *J. Climate*, **19**(11): 2144–2161. doi:[10.1175/JCLI3760.1](https://doi.org/10.1175/JCLI3760.1).
- Craft, M., 2012: Hurricane Sandy's Economic Damage Could Reach \$50 Billion, Eqqcat Estimates. *Huffington Post*. Retrieved.
- DeGaetano, A. and R. Allen, 2002: Trends in Twentieth-Century Temperature Extremes across the United States. *J. Climate*, **15**(22): 3188–3205. doi:[10.1175/1520-0442\(2002\)015<3188:TITCTE>2.0.CO;2](https://doi.org/10.1175/1520-0442(2002)015<3188:TITCTE>2.0.CO;2).
- Diffenbaugh, N., J. Bell and L. Sloan, 2006: Simulated changes in extreme temperature and precipitation events at 6 ka. *Palaeogeography, Palaeoclimatology, Palaeoecology*, **236**(1): 151–168. doi:[10.1016/j.palaeo.2005.11.037](https://doi.org/10.1016/j.palaeo.2005.11.037).
- Dutkiewicz, S., M. Follows and J. Bragg, 2009: Modeling the coupling of ocean ecology and biogeochemistry. *Global Biogeochem. Cycles*, **23**(4): GB4017. doi:[10.1029/2008GB003405](https://doi.org/10.1029/2008GB003405).
- Dutkiewicz, S., A. P. Sokolov, J. Scott and P. H. Stone, 2005: A Three-Dimensional Ocean-Seaice-Carbon Cycle Model and its Coupling to a Two-Dimensional Atmospheric Model: Uses in Climate Change Studies. MIT Joint Program on the Science and Policy of Global Change *Report 122*, 47 p. (http://globalchange.mit.edu/files/document/MITJPSPGC_Rpt122.pdf).
- Easterling, D., J. Evans, P. Groisman, T. Karl, K. Kunkel and P. Ambenje, 2000: Observed Variability and Trends in Extreme Climate Events: A Brief Review. *Bull. Amer. Meteor. Soc.*, **81**(3): 417–426. doi:[10.1175/1520-0477\(2000\)081<0417:OVATIE>2.3.CO;2](https://doi.org/10.1175/1520-0477(2000)081<0417:OVATIE>2.3.CO;2).
- Garcia-Herrera, R., J. Diaz, R. M. Trigo, J. Luterbacher and E. M. Fischer, 2010: A Review of the European Summer Heat Wave of 2003. *Crit. Rev. Environ. Sci. Technol.*, **40**(4): 267–306. doi:[10.1080/10643380802238137](https://doi.org/10.1080/10643380802238137).

- Groisman, P., R. Knight, D. Easterling, T. Karl, G. Hegerl and V. Razuvaev, 2005: Trends in intense precipitation in the climate record. *J. Climate*, **18**(9): 1326–1350. doi:[10.1175/JCLI3339.1](https://doi.org/10.1175/JCLI3339.1).
- Hicke, J., G. Asner, J. Randerson, C. Tucker, S. Los, R. Birdsey, J. Jenkins and C. Field, 2002: Trends in North American net primary productivity derived from satellite observations, 1982–1998. *Global Biogeochem. Cycles*, **16**(2): 1018. doi:[10.1029/2001GB001550](https://doi.org/10.1029/2001GB001550).
- IPCC, 2007a: *Climate Change 2007: Synthesis Report. Contribution of Working Groups I, II and III to the Fourth Assessment Report of the Intergovernmental Panel on Climate Change*, Pachauri, R. and A. Reisinger (eds.). Cambridge University Press, Cambridge, United Kingdom and New York, NY, USA, 104 p.
- IPCC, 2007b: Summary for policymakers. In: *Climate Change 2007: The Physical Science Basis. Contribution of Working Group I to the Fourth Assessment Report of the Intergovernmental Panel on Climate Change*, S. Solomon, D. Qin, M. Manning, Z. Chen, M. Marquis, K. Averyt, M. Tignor and H. Miller, (eds.), Cambridge University Press, Cambridge, United Kingdom and New York, NY, USA.
- Kunkel, K., P. Bromirski, H. Brooks, T. Cavazos, A. Douglas, D. Easterling, K. Emanuel, P. Groisman, G. Holland, T. Knutson, J. Kossin, P. Komar, D. Levinson and R. Smith, 2008: Observed Changes of Weather and Climate Extremes. In: *Weather and Climate Extremes in a Changing Climate: Regions of Focus: North America, Hawaii, Caribbean, and US Pacific Islands*, T. Karl, G. Meehl, C. Miller, S. Hassol, A. Waple and W. Murray, (eds.), A Report by the U.S. Climate Change Science Program and the Subcommittee on Global Change Research, Washington, DC.
- Leibensperger, E., L. Mickley and D. Jacob, 2008: Sensitivity of US air quality to mid-latitude cyclone frequency and implications of 1980–2006 climate change. *Atmos. Chem. Phys.*, **8**(23): 7075–7086. doi:[10.5194/acp-8-7075-2008](https://doi.org/10.5194/acp-8-7075-2008).
- Mahmud, A., M. Hixson and M. Kleeman, 2012: Quantifying population exposure to airborne particulate matter during extreme events in California due to climate change. *Atmos. Chem. Phys.*, **12**: 7453–7463. doi:[10.5194/acp-12-7453-2012](https://doi.org/10.5194/acp-12-7453-2012).
- Maracchi, G., O. Sirotenko and M. Bindi, 2005: Impacts of present and future climate variability on agriculture and forestry in the temperate regions: Europe. In: *Increasing Climate Variability and Change*, J. Salinger, M. Sivakumar and R. Motha, (eds.), Springer, pp. 117–135. doi:[10.1007/1-4020-4166-7_6](https://doi.org/10.1007/1-4020-4166-7_6).
- Mayer, M., C. Wang, M. Webster and R. Prinn, 2000: Linking local air pollution to global chemistry and climate. *J. Geophys. Res.*, **105**(D18): 22869–22. doi:[10.1029/2000JD900307](https://doi.org/10.1029/2000JD900307).
- Meehl, G., J. Arblaster and C. Tebaldi, 2005: Understanding future patterns of increased precipitation intensity in climate model simulations. *Geophys. Res. Lett.*, **32**(18): L18719. doi:[10.1029/2005GL023680](https://doi.org/10.1029/2005GL023680).
- Mesinger, F., G. DiMego, E. Kalnay, K. Mitchell, P. Shafran, W. Ebisuzaki, D. Jovic, J. Woollen, E. Rogers, E. Berbery *et al.*, 2006: North American Regional Reanalysis. *Bull. Amer. Meteor. Soc.*, **87**(3): 343–360. doi:[10.1175/BAMS-87-3-343](https://doi.org/10.1175/BAMS-87-3-343).

- Monier, E., X. Gao, J. Scott, A. Sokolov and C. Schlosser, 2013a: A framework for modeling uncertainty in regional climate change. MIT Joint Program on the Science and Policy of Global Change *Report 244*, 16 p.
(http://globalchange.mit.edu/files/document/MITJPSPGC_Rpt244.pdf).
- Monier, E., J. R. Scott, A. P. Sokolov, C. E. Forest and C. A. Schlosser, 2013b: An integrated assessment modelling framework for uncertainty studies in global and regional climate change: the MIT IGSM-CAM (version 1.0). *Geosci. Model Dev. Discuss.*, **6**: 2213–2248. doi:10.5194/gmdd-6-2213-2013.
- Paltsev, S., E. Monier, J. R. Scott, A. P. Sokolov and J. M. Reilly, 2013: Integrated Economic and Climate Projections for Impact Assessment. MIT Joint Program on the Science and Policy of Global Change *Report 243*, 15 p.
(http://globalchange.mit.edu/files/document/MITJPSPGC_Rpt243.pdf).
- Paltsev, S., J. M. Reilly, H. D. Jacoby, R. S. Eckaus, J. McFarland, M. Sarofim, M. Asadoorian and M. Babiker, 2005: The MIT Emissions Prediction and Policy Analysis (EPPA) Model: Version 4. MIT Joint Program on the Science and Policy of Global Change *Report 125*, 72 p.
(http://globalchange.mit.edu/files/document/MITJPSPGC_Rpt125.pdf).
- Parmesan, C., T. Root and M. Willig, 2000: Impacts of extreme weather and climate on terrestrial biota. *Bull. Amer. Meteor. Soc.*, **81**(3): 443–450.
doi:10.1175/1520-0477(2000)081<0443:IOEWAC>2.3.CO;2.
- Penning-Rowsell, E. and T. Wilson, 2006: Gauging the impact of natural hazards: the pattern and cost of emergency response during flood events. *Trans. Inst. Br. Geogr.*, **31**(2): 99–115.
doi:10.1111/j.1475-5661.2006.00200.x.
- Robine, J.-M., S. L. K. Cheung, S. Le Roy, H. Van Oyen, C. Griffiths, J.-P. Michel and F. R. Herrmann, 2008: Death toll exceeded 70,000 in Europe during the summer of 2003. *C. R. Biol.*, **331**(2): 171–U5. doi:10.1016/j.crv.2007.12.001.
- Rosenzweig, C., A. Iglesias, X. Yang, P. Epstein and E. Chivian, 2001: Climate Change and Extreme Weather Events; Implications for Food Production, Plant Diseases, and Pests. *Global Change and Human Health*, **2**(2): 90–104. doi:10.1023/A:1015086831467.
- Schlosser, C. A., D. Kicklighter and A. P. Sokolov, 2007: A global land system framework for integrated climate-change assessments. MIT Joint Program on the Science and Policy of Global Change *Report 147*, 60 p.
(http://globalchange.mit.edu/files/document/MITJPSPGC_Rpt147.pdf).
- Smoyer-Tomic, K., R. Kuhn and A. Hudson, 2003: Heat Wave Hazards: An Overview of Heat Wave Impacts in Canada. *Nat. Hazards*, **28**(2): 465–486. doi:10.1023/A:1022946528157.
- Sokolov, A. and E. Monier, 2012: Changing the Climate Sensitivity of an Atmospheric General Circulation Model through Cloud Radiative Adjustment. *J. Climate*, **25**(19): 6567–6584.
doi:10.1175/JCLI-D-11-00590.1.
- Strzepek, K., G. Yohe, J. Neumann and B. Boehlert, 2010: Characterizing changes in drought risk for the United States from climate change. *Environ. Res. Lett.*, **5**(4): 044012.
doi:10.1088/1748-9326/5/4/044012.

- Waldhoff, S., J. Martinich, M. Sarofim, B. DeAngelo, J. McFarland, L. Jantarasami, K. Shouse, A. Crimmins and J. Li, 2013: Overview of the Special Issue: A multi-model framework to achieve consistent evaluation of climate change impacts in the United States. *Climatic Change*, under review.
- Walker, M. and N. Diffenbaugh, 2009: Evaluation of high-resolution simulations of daily-scale temperature and precipitation over the United States. *Clim. Dyn.*, **33**(7): 1131–1147. doi:[10.1007/s00382-009-0603-y](https://doi.org/10.1007/s00382-009-0603-y).
- Wang, C., R. Prinn and A. Sokolov, 1998: A global interactive chemistry and climate model-Formulation and testing. *J. Geophys. Res.*, **103**: 3399–3417. doi:[10.1029/97JD03465](https://doi.org/10.1029/97JD03465).
- Wright, L., P. Chinowsky, K. Strzepek, R. Jones, R. Streeter, J. Smith, J. Mayotte, A. Powell, L. Jantarasami and W. Perkins, 2012: Estimated effects of climate change on flood vulnerability of U.S. bridges. *Mitig. Adapt. Strat. Global Change*, **17**(8): 939–955. doi:[10.1007/s11027-011-9354-2](https://doi.org/10.1007/s11027-011-9354-2).
- Xiao, J., Q. Zhuang, E. Liang, X. Shao, A. McGuire, A. Moody, D. Kicklighter and J. Melillo, 2009: Twentieth-Century Droughts and Their Impacts on Terrestrial Carbon Cycling in China. *Earth Interactions*, **13**(10): 1–31. doi:[10.1175/2009EI275.1](https://doi.org/10.1175/2009EI275.1).
- Yergin, D., 2006: Ensuring Energy Security. *Foreign Affairs*, **85**(2): 69–82. doi:[10.2307/20031912](https://doi.org/10.2307/20031912).

REPORT SERIES of the MIT Joint Program on the Science and Policy of Global Change

FOR THE COMPLETE LIST OF JOINT PROGRAM REPORTS:
<http://globalchange.mit.edu/pubs/all-reports.php>

199. **Future Yield Growth: *What Evidence from Historical Data*** Gitiiaux *et al.* May 2011
200. **A Strategy for a Global Observing System for Verification of National Greenhouse Gas Emissions** Prinn *et al.* June 2011
201. **Russia's Natural Gas Export Potential up to 2050** Paltsev July 2011
202. **Distributional Impacts of Carbon Pricing: *A General Equilibrium Approach with Micro-Data for Households*** Rausch *et al.* July 2011
203. **Global Aerosol Health Impacts: *Quantifying Uncertainties*** Selin *et al.* August 2011
204. **Implementation of a Cloud Radiative Adjustment Method to Change the Climate Sensitivity of CAM3** Sokolov and Monier September 2011
205. **Quantifying the Likelihood of Regional Climate Change: *A Hybridized Approach*** Schlosser *et al.* October 2011
206. **Process Modeling of Global Soil Nitrous Oxide Emissions** Saikawa *et al.* October 2011
207. **The Influence of Shale Gas on U.S. Energy and Environmental Policy** Jacoby *et al.* November 2011
208. **Influence of Air Quality Model Resolution on Uncertainty Associated with Health Impacts** Thompson and Selin December 2011
209. **Characterization of Wind Power Resource in the United States and its Intermittency** Gunturu and Schlosser December 2011
210. **Potential Direct and Indirect Effects of Global Cellulosic Biofuel Production on Greenhouse Gas Fluxes from Future Land-use Change** Kicklighter *et al.* March 2012
211. **Emissions Pricing to Stabilize Global Climate** Bosetti *et al.* March 2012
212. **Effects of Nitrogen Limitation on Hydrological Processes in CLM4-CN** Lee & Felzer March 2012
213. **City-Size Distribution as a Function of Socio-economic Conditions: *An Eclectic Approach to Down-scaling Global Population*** Nam & Reilly March 2012
214. **CliCrop: a Crop Water-Stress and Irrigation Demand Model for an Integrated Global Assessment Modeling Approach** Fant *et al.* April 2012
215. **The Role of China in Mitigating Climate Change** Paltsev *et al.* April 2012
216. **Applying Engineering and Fleet Detail to Represent Passenger Vehicle Transport in a Computable General Equilibrium Model** Karplus *et al.* April 2012
217. **Combining a New Vehicle Fuel Economy Standard with a Cap-and-Trade Policy: *Energy and Economic Impact in the United States*** Karplus *et al.* April 2012
218. **Permafrost, Lakes, and Climate-Warming Methane Feedback: *What is the Worst We Can Expect?*** Gao *et al.* May 2012
219. **Valuing Climate Impacts in Integrated Assessment Models: *The MIT IGSM*** Reilly *et al.* May 2012
220. **Leakage from Sub-national Climate Initiatives: *The Case of California*** Caron *et al.* May 2012
221. **Green Growth and the Efficient Use of Natural Resources** Reilly June 2012
222. **Modeling Water Withdrawal and Consumption for Electricity Generation in the United States** Strzepek *et al.* June 2012
223. **An Integrated Assessment Framework for Uncertainty Studies in Global and Regional Climate Change: *The MIT IGSM*** Monier *et al.* June 2012
224. **Cap-and-Trade Climate Policies with Price-Regulated Industries: *How Costly are Free Allowances?*** Lanz and Rausch July 2012.
225. **Distributional and Efficiency Impacts of Clean and Renewable Energy Standards for Electricity** Rausch and Mowers July 2012.
226. **The Economic, Energy, and GHG Emissions Impacts of Proposed 2017–2025 Vehicle Fuel Economy Standards in the United States** Karplus and Paltsev July 2012
227. **Impacts of Land-Use and Biofuels Policy on Climate: *Temperature and Localized Impacts*** Hallgren *et al.* August 2012
228. **Carbon Tax Revenue and the Budget Deficit: *A Win-Win Solution?*** Sebastian Rausch and John Reilly August 2012
229. **CLM-AG: An Agriculture Module for the Community Land Model version 3.5** Gueneau *et al.* September 2012
230. **Quantifying Regional Economic Impacts of CO₂ Intensity Targets in China** Zhang *et al.* September 2012
231. **The Future Energy and GHG Emissions Impact of Alternative Personal Transportation Pathways in China** Kishimoto *et al.* September 2012
232. **Will Economic Restructuring in China Reduce Trade-Embodied CO₂ Emissions?** Qi *et al.* October 2012
233. **Climate Co-benefits of Tighter SO₂ and NO_x Regulations in China** Nam *et al.* October 2012
234. **Shale Gas Production: *Potential versus Actual GHG Emissions*** O'Sullivan and Paltsev November 2012
235. **Non-Nuclear, Low-Carbon, or Both? *The Case of Taiwan*** Chen December 2012
236. **Modeling Water Resource Systems under Climate Change: *IGSM-WRS*** Strzepek *et al.* December 2012
237. **Analyzing the Regional Impact of a Fossil Energy Cap in China** Zhang *et al.* January 2013
238. **Market Cost of Renewable Jet Fuel Adoption in the United States** Winchester *et al.* January 2013
239. **Analysis of U.S. Water Resources under Climate Change** Blanc *et al.* February 2013
240. **Protection of Coastal Infrastructure under Rising Flood Risk** Lickley *et al.* March 2013
241. **Consumption-Based Adjustment of China's Emissions-Intensity Targets: *An Analysis of its Potential Economic Effects*** Springmann *et al.* March 2013
242. **The Energy and CO₂ Emissions Impact of Renewable Energy Development in China** Zhang *et al.* April 2013
243. **Integrated Economic and Climate Projections for Impact Assessment** Paltsev *et al.* May 2013
244. **A Framework for Modeling Uncertainty in Regional Climate Change** Monier *et al.* May 2013
245. **Climate Change Impacts on Extreme Events in the United States: An Uncertainty Analysis** Monier and Gao May 2013